

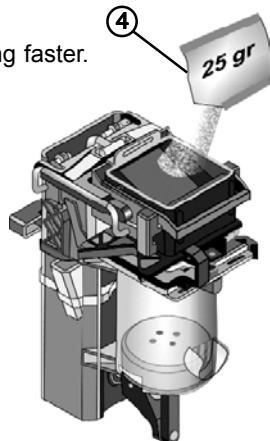
The brewmechanism can easily be cleaned with the key switch in "cup" (normal) position.



1. Turn the key slowly ninety degrees and back again. Push button "→" in 6 seconds.

2. After 4 seconds a signal will start going faster.

3. After 6 seconds, display shows; "Open door" "load detergent".



④ 4. Fill 25gr detergent (one portion bag) in to the brew-mechanism.

5. The display shows; "Close door"

6. The display shows; "When ready press key" Place a jug into the drip tray and push button "→"

7. The display shows: "Rinsing coffee" "Soak time:" The machine start to count down from 300 seconds.

8. The display shows. "Brewer cycle" the machine is counting down.

9. When the machine has counted down, take out a cup of coffee and waste it just to make sure that there is nothing left of detergent, then the machine its ready to use again.

NOTE! Dont stop the process when detergent has been loaded. Then the cleaning must be finished.

Wash when needed:

Ingredients canister

Can be washed in dish water machine

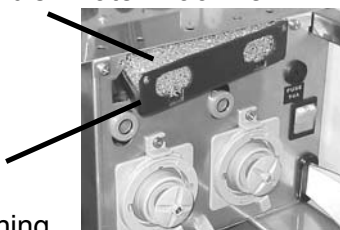


Chute

Can be washed in dish water machine



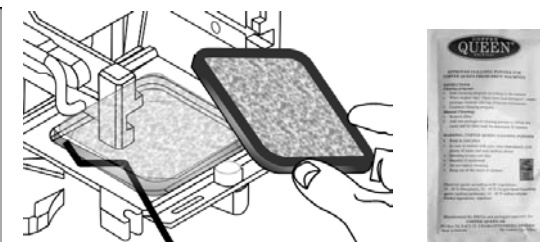
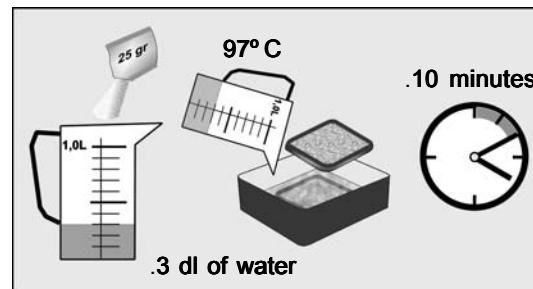
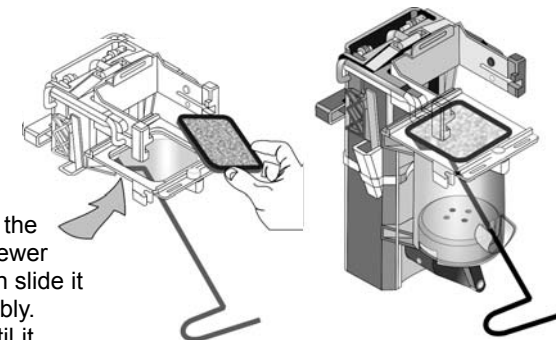
Filter Can be washed in dish water machine



Dust trap

Hand washing

1. Push "+ button" in 6 seconds.
2. After 6 seconds the display shows; "Change paper/ Rotate" "Push E/+".
3. Push "E" button.
4. The display shows; "Preparing paperload". and machine will rotate in position.
5. When the display shows, "Change paper" open the door and insert the extractor tool through the brewer spout all the way to the back of the cylinder, then slide it up until contact is made with the screen assembly. Push up on the rear of the screen assembly until it pops out of the cylinder.
8. Soak the screen assembly in a solution of 25gr. bleach in 3dl water for a maximum of 10 minutes. Give...screen a good rinse before reassembly it.
9. Remount the screen assembly and close the door. Then the machine will return to start position and the machine is ready for use.



Order: (Cleaning agent receives from your retail dealer)

Cleaning agent: (brew mechanism)

Coffee Queen article no 1104161

Filter: (brew mechanism)

Coffee Queen article no 47200212

Tool: (dismantling filter)

Coffee Queen article no 4720090

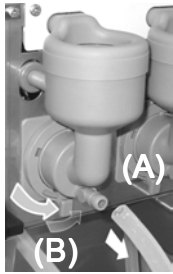
For Service:

Please contact; _____

phone. _____

Dismantle : Mixer system

1. Loose outlet hose (A) and turn lock knob (B) anti-clockwise.



2. Loose mixer bowl. Pull apart (C).



3. Loose whipper (D) pull whipper straight out from the machine.

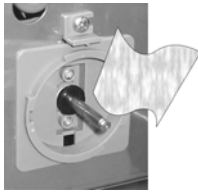


4. Turn lock knob anti-clockwise.(E) until it stops



Wash these parts:

Clean with a wet rag and drought drily.



- A. Mixer bowl
- B. Steam trap
- C. Whipper
- D. Assembly plate



Make sure this parts are dry before use

NOTE! INSPECT gaskets

REASSEMBLE: Mixer system

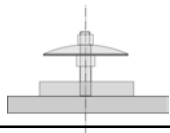
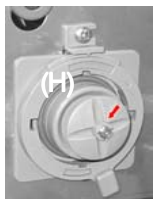
5. Reassemble the assembly plate by turning lock knob (F) clockwise. **INSPECT** gaskets.



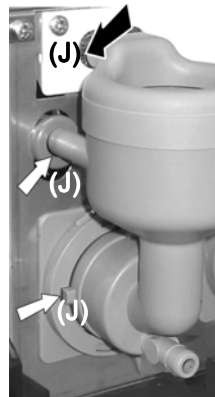
6. Make sure that the motorwhippers plane side will be in accordance with the whippers plane side. see (G) and next picture (H).



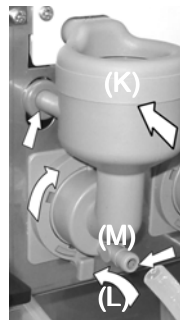
7. Assemble whipper, pull until you hear a clicking noise. (H).



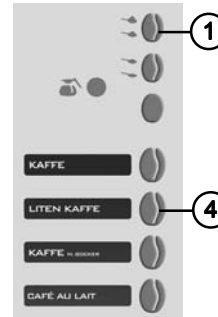
8. Assemble mixer bowl and steam trap (J) see picture.



9. Easily push the mixer bowl towards, according to (K) and lock with lock knob (L). Connect outlet hose (M). **(NOTE!** make sure that all water hose are connected at right place



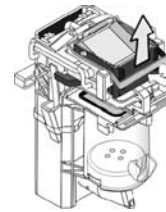
Cleaning of top



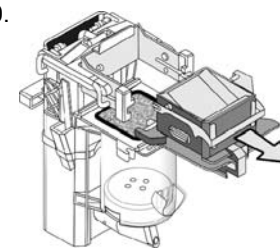
1. Push "+" button in 6 seconds
2. The display shows: "Change paper/Rotate" "Push E/+"
3. Push E button.
4. The display shows: "Preparing paperload".
5. The machine will rotate in position.
6. The display shows: "Change paper"
7. Open the door, dismantle, wash and reassemble the top. Close the door.

Dismantle top:

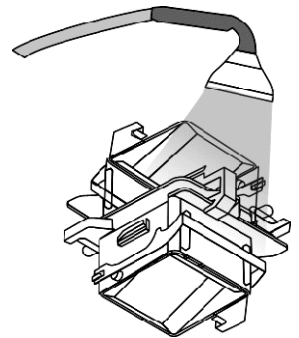
9.



10.

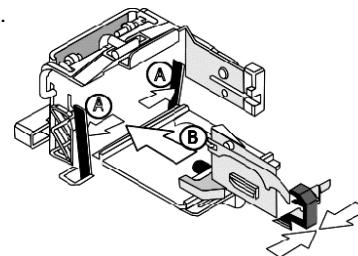


11.



Reassemble top:

12.



13. **NOTE!** When assemble the top make sure that B wiper are between A arms.

14. The machine is now ready to use.

Cleaning when needed; Dismantle - Wash - Assemble

To be washed when needed

Drip tray and its insert to be washed by hand in ordinary dishwasher. **Must not be washed in a dish washing machine!**

Drip grid



Drip tray

