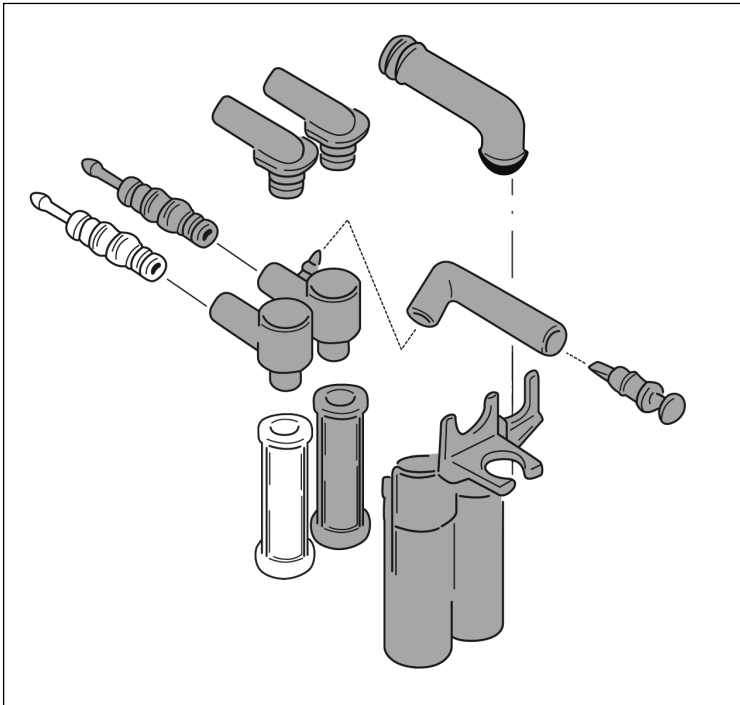


Cleaning and maintenance instructions IMPRESSA X9

Dismantling the combi-spout of the IMPRESSA X9




- Remove the cover.
- Dismantle the spouts into individual parts (see above).
- Thoroughly rinse the parts through with hot water.
- Reassemble the individual parts.

! For more comprehensive information as well as detailed instructions for the cleaning and maintenance of your IMPRESSA X9, please refer to the instruction manual – also available at www.jura.com.


Milk cleaning

When milk products are used, please note that a milk cleaning programme must be carried out daily. No corresponding prompt appears in the display, however.


- ! Once started, the cleaning programme must not be interrupted. The programme lasts approx. 2 min.
- Press the  button and follow the display prompts.
- Clean the combi-spout according to the description given on the front.

Coffee cleaning

After 220 draw-off operations or 80 switch-on rinses, a coffee cleaning programme must be carried out. **CLEAN** appears in the display



- ! Once the cleaning programme has started, it must not be interrupted. The programme lasts approx. 15 min.
- Press the  button and follow the display prompts. Be sure to have one original JURA cleaning tablet ready.

Combi-cleaning

If you want to carry out the milk cleaning and the coffee cleaning directly one after the other, you should press the  button.



Descaling

If you do not use a water filter, your machine must be descaled from time to time. **DESCALE** appears in the display

- ! Once the descaling programme has started, it must not be interrupted. The programme lasts approx. 40 min.
- Press the  button and follow the display prompts.
- When the display prompt **SOLVENT IN T** appears, dissolve three original JURA descaling tablets in 0.7 litres of water. Pour the mixture into the water tank and press the  button.

Changing the filter

When the water filter is exhausted, **CHANGE FILTER** appears in the display.

- ! The first installation of the water filter must be carried out by the service engineer
- Press the  button.
- When **INSERT FILTE** appears in the display, please replace the filter cartridge.
- Fill the water tank with fresh water, place a sufficiently large receptacle under the hot water spout and press the  button.
- As soon as **COFFEE READY** appears in the display, the filter change has been successfully completed.